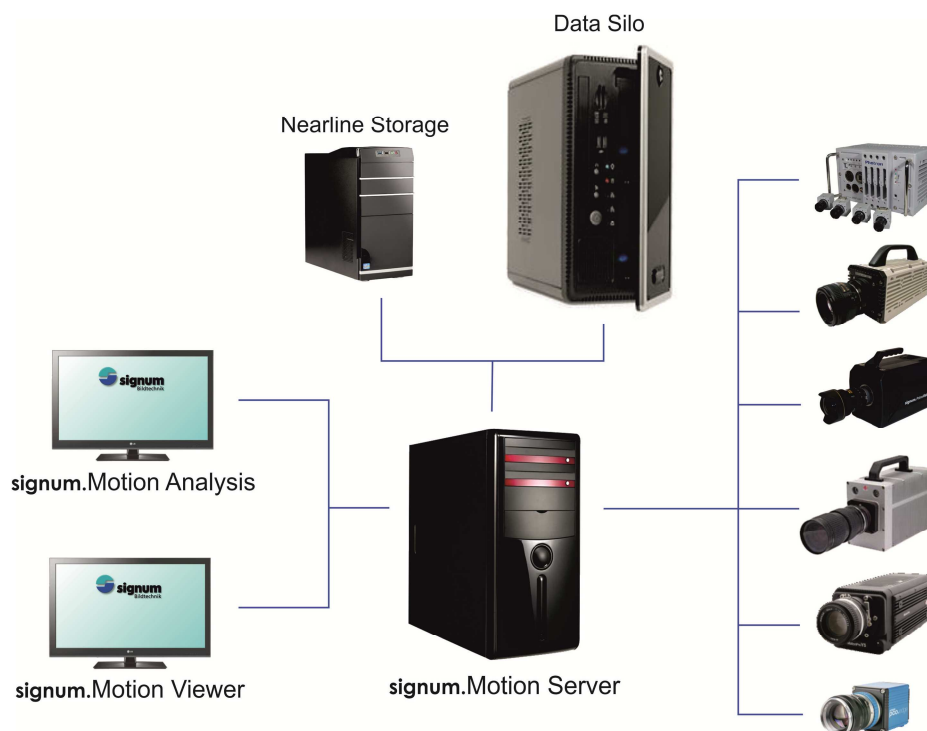


# Signum CameraControl

Editing and Display of Sequences

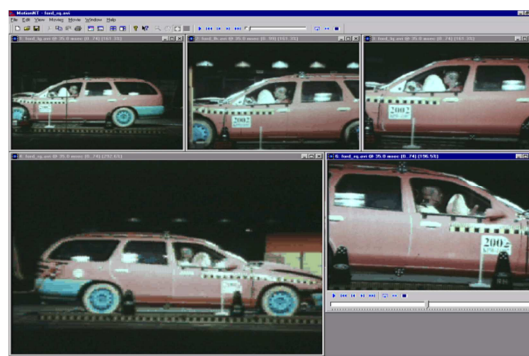


The software **signum.CameraControl** is the central software for the editing and display of digital image data in combination with **signum.MotionAnalysis**. All raw data (e.g. of the Nac, Phantom, IDT, PCO, etc.) are edited by this software and compiled for further processing.

It is possible to examine, edit, enhance and display single frames and to convert entire sequences in sequence file formats (e. g. AVI) and any other single file formats.

Notes can be entered in the Multimedia-Exchange (MME) format on a test and thus be made available for other users. The image-server is also

able to use special functions for synchronous display of sequences and diagrams of externally received data and video analysis.



## FEATURES

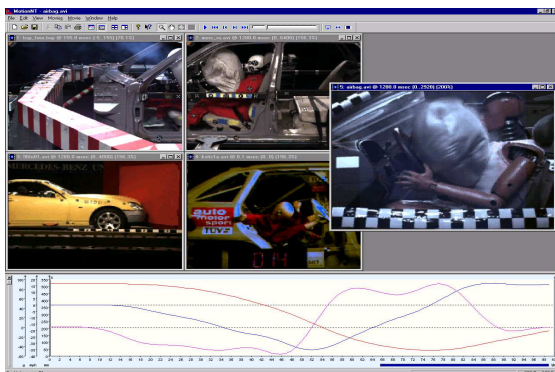
The integrated real time player is capable to display sequences immediately after downloading to the **signum.CameraControl**. Thus it is not necessary to convert movies into AVIs to view the results.

Specialized algorithms to convert video raw data achieve an improved image quality. They allow the exact determination of an object's position with additional algorithms.

A variety of high speed cameras can be controlled with the Multi Camera Interface. It is possible to set the parameters for each camera and control the imager.

While recording the video data is stored in the RAM of the imager. After the recording the data is transferred to the image server.

Additional devices like film and video scanners can be integrated in the **signum.CameraControl**.



### Multi-Camera-Interface

The structure of the Multi Camera Interfaces of Signum Bildtechnik is able to control different camera models at the same time in a single test, as well as cameras from different manufacturers.

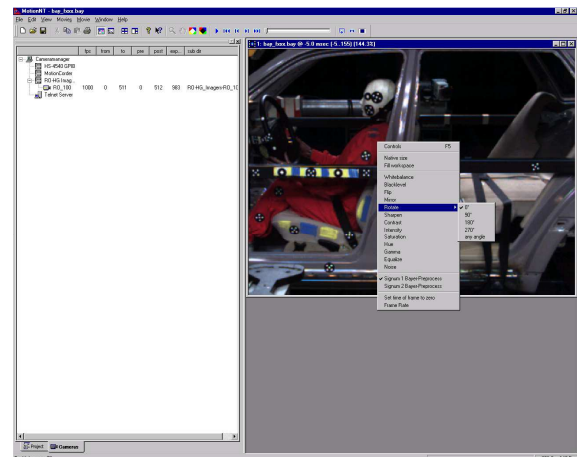
Notes can be entered in the Multimedia-Exchange format (MME) on a test and thus be made available for other users.

The **signum.CameraControl** is also able to use special functions for synchronous display of sequences and diagrams of externally received data and video analysis.

The **signum.CameraControl** can handle all video data. The data can be transferred automatically from the test facility to a database.

The integrated Network server (option) controls all connected cameras types through a standard network protocol.

The cameras can also be controlled with digital signals from the track system PLC.



The Multi-camera Interface is supporting the following camera models and types:

- **Kodak/Redlake:** HS 4540, HG 100K, RO, HG, HG-TX, X-3
- **NAC:** K5, GX1, GX5, FX
- **Photron:** MH4, MH1, SA1, SA2
- **IDT:** N(R)-series, X-series, Y-series
- **PCO:** Inspector HS 1200, dimax
- **Olympus:** i-SPEED 3

# FEATURES

---

## Editing and Display of Sequences

- standard recording conditions camera configuration stored in a database
- remote control of different camera types control of the imager triggering testing
- visual control of all camera views before the test live video signal on VGA or video monitor quick look through computer interface
- transfer of the digital video data via ethernet, scsi, firewire, etc
- Network server (option) for remote control of all camera types via standard network protocol from external applications
- Real time player for displaying video data immediately after download.
- No need for data conversion to avi
- Processing and displaying of video material
- Conversion into TIF, BMP, DIB, JPEG....
- Conversion into video formats like AVI, MPEG
- Quicklook function with image enhancement e.g.:
  - white balance
  - contrast
  - intensity
  - color space manipulations
  - sharpen
  - rotation, mirror
  - export of data into the clipboard
  - printing of images
- Display of sequences synchronized with measurement data (DIADEM, ISO, PIAS, LEAR, MOTION etc.)
- Interfaces to company video archives
- Integrated CD/DVD recording
- Storage of test data in MME format for exchange with other companies and departments

## Multi-Camera Interface

- Option to control the entire feature set of a chosen camera camera
- fast high speed CMOS camera
- Support of any resolution
- Support of all different camera speeds
- Support of all color grades from monochrome to 8bit or 10bit
- recording time up to the full memory size
- Full Integration of camera family into MOTION environment
- remote control of different camera models, also from different manufacturers, at the same time
- setting of recording parameters
- recording trigger control
- Visual control of all camera views before the test
- Transfer of digital image data after a test using Ethernet, etc.
- Server (option) for remote control of all camera types via standard network protocol from external applications
- Storage of test data in MME format for exchange with other companies and departments